



**Rotary** 

**REGISTRATIONS NOW OPEN**

**10 March 2024**    **TAKE-OFF 6.15AM**

Take part in this unique fun run and walk, and help us raise vital funds for charity.



**WWW.RUNTHERUNWAY.ORG**

**When is this event?** **Sunday 10th March 2024**

**What time does it start?\*** **06:15am** Pre race warm up 05.45 – 06.00am, Runners start 06.15am. Walkers will need to gather at the back of the field behind the runners.

**\* Please note:** Start times may be subject to change owing to aircraft arrivals & departures.

**What do I need to bring with me to this event?** You must bring your registration ticket as your ID. It is a CAA requirement that everyone produces ID and this will be checked.

**When do entries close?** This event is limited to 500 people. As soon as the 500 places are filled, entries will close. The cut-off time is 12 noon on Saturday, 9<sup>th</sup> March 2024.

**Can Children enter this event?** Yes! It is open to all ages. (See below)

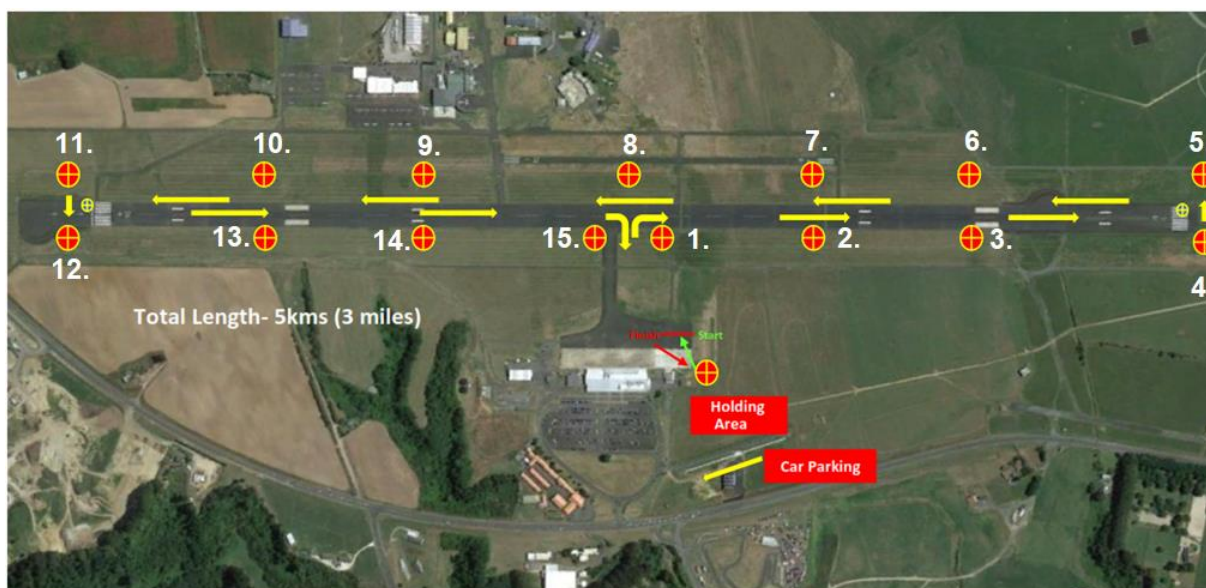
**How many children can we bring on a family ticket?** A family ticket covers 2 adults and 2 children (under 16 years). Anyone under 16 and not accompanied by an adult must register and buy a ticket as a full competitor.

**Is there prize money for the event?** We make no apology that there is no prize money for this event. We are offering a unique experience and the main purpose of this event is raise funds for Rotary charities. A number of spot prizes will be awarded at the end of the event.

**Can I enter as a walker?** Walkers are welcome to take part in this event, as long as you are able to cover the 5km of the run/walk. You must complete the event within one hour, if you are unable to do so, you will be picked up by support vehicles and taken to the entry point.

**What is the weather likely to be?** The average 6.00am temperature in Hamilton in March is 13 degrees. There will be some standing around before the event starts, so we suggest you have warm clothing and or a light jacket.

**Can I dress up in costume for this event?** Because this event is on an Airport runway, only normal active wear and running/walking footwear with no embellishments or accessories. We cannot risk any items being left on the runway, which may damage aircraft!



 RACE MARSHALS x 15

## Course Info

**Can you describe the Run the Runway course?** Participants will enter the runway from Gate 4 next to the emergency services at the far end of the airport terminal. Car parking will be available in the carpark at the airport for a gold coin donation. This will be signposted from the Airport Entrance and parking attendants will be on hand to help you with this.

**Is there a time limit or cut off time for any of the events?** You must complete the event within one hour, if you are unable to do so, you will be picked up by a support vehicle and returned to the entry point.

**Will the course be closed to air traffic?** The runway is officially closed for the duration of the event. If there is an emergency which means a plane needs to land, you will be directed by the race marshals what to do.

### What are the rules of the run?

- **Keep** to the right of the course to allow people to pass on the left
- **Keep** the cones on your left at all times
- **Be** courteous to your fellow participants at all times
- **Please** obey instructions from race officials, volunteers and or airport management staff at all times

**Has the course been officially measured?** No. This race is for fun, personal challenge and experience. The length of the course is 5km.

**What help is located on course?** Officials will be situated around the course and are easily identifiable. There will be a first aid stand at the Fire & Rescue Services building beside the entrance to the Runway. You are allowed to carry 1 water bottle in the race. The airport facilities will also be open – entry is only available through the main doors on the car park side of the building.

**Is there an Official Race Medal?** Yes! A medal is available to each runner or walker.

**Is the course open to Wheelchairs, Cycles, Roller Blades, Prams/Buggies, Skate-Boards,** Wheelchairs, prams/ buggies/ mobility scooters/ GoBabyGo cars, Bikes & Trikes for the disabled are allowed. Roller blades, skateboards, hover boards or any other propulsion devices **are not permitted**. Babies or toddlers in prams do not require a ticket.

**Animals: These are not permitted on the runway.**

## Race Day Info

**Where can I park?** Parking is available to the right of the Main Airport Entrance for a gold coin donation.

**If you wish to travel by vehicle, follow the signs for event parking at the airport complex.** A gold coin donation will be appreciated for parking.

**How do I get to the race start?** Event Officials will help you find the entry point if you need assistance. Please go to the check in area, in the Competitors Holding Area.

**How do I wear my race number?** Please ensure your number is securely fastened to the **Front** of your running top and is visible at all times.

**Will the race be timed?** We will have a time clock at the event finish line. It will be up to individuals to note their own time as they cross the finish line.

**How do I know where to stand at the start line?** Runners will stand at the front of the start line with walkers behind. Please use your own judgement as to where you should stand in the line up, to allow those serious runners space to run freely.

**Can I take a mobile phone with me on the course?** Yes, you will be allowed to take your phone with you and are free to take pictures on the runway.

**What if I have to drop out?** Please make your way to the nearest race official. If you are unable to continue due to a medical emergency, please ask your fellow competitors to inform the next visible race official or volunteer who will be able to inform medical services of your location.

**What facilities will there be at the finish area?** Once you have exited the runway, there will be a food and drinks stand in the grass carpark area at the end of the terminal. The Propeller cafe in the Airport will be open if you would like to purchase a coffee or breakfast.

**Toilet facilities?** These are available upstairs and downstairs in the main Hamilton Airport building. Entry is only available through the main front doors of the airport.

**Where does my entry fee go?** All funds paid for the 2024 event will go directly for distribution to supporting the charity "GoBabyGo".